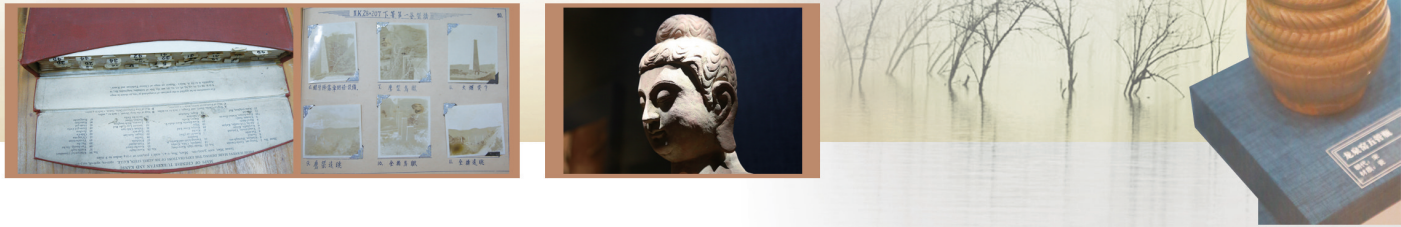


Nantongreport

Three cultural relics of Jianghai Museum applied for national First Grade Cultural Relics



By Li Bo

Recently Jiangsu Jianghai Museum invited domestic famous cultural relic authentication experts to form a group. They authenticated and evaluated more than 2000 cultural relics in the museum, rated 837 third grade cultural relics,

25 second grade cultural relics. 3 cultural relics were recommended as first grade cultural relics. They will be reported to National Cultural Heritage Administration and be evaluated.

Jiangsu Jianghai Museum located at Haimen district of

Nantong is the only national middle sized provincial level museum in China and the 1st in Jiangsu, with a lot of Jianghai cultural characters.

The three collections which were recommended as first grade cultural relics are stone carved standing Buddha statue

on lotus throne of Northern Qi dynasty, Longquan kiln Wuguanping of Song dynasty, and a set of railway and bridge design and construction drawings done by famous railway, highway and bridge expert from Haimen, Gong Jicheng, and site photos.

News Brief

12 trade delegations working on investment promotion

Nantong confirmed The 3rd China International Import Expo organization and implementation plan

By Liu Lu

On 14 September, Nantong bureau of commerce held the 3rd China International Import Expo Nantong trade delegation contact people work conference, arranged work about the 3rd China International Import Expo Nantong trade group organization and implementation plan.

The 3rd China International Import Expo will be held at National Exhibition and Convention Center (Shanghai) from 5 to 10 November. The application will be terminated by 30 September. Previously Nantong has organized more than 80 participating companies to join 5 pre-exhibition supply and demand meeting, to reach preliminary cooperation agreement. In the present Nantong trade delegations are working on investment promotion, refer to the major purchaser invitation list provided by China International Import Expo Bureau, using trade delegation data base, inviting purchasers one to one. There will be more than 1500 Nantong companies to participate this year.

5 Nantong companies shortlisted in world's largest international contractors list

By Liu Lu

Recently 2020 America Engineering News Record (ENR) 'global top 250 international contractors' list was published. Yesterday the reporter learnt from municipal foreign economic cooperation association that in total 74 Chinese companies are shortlisted. Among the 8 Jiangsu companies on the list, 5 are from Nantong.

Longxin construction group is ranked the 194th; Nantong Construction Group Co., Ltd. is ranked the 205th; Nantong Si Jian Construction Group Co., Ltd. is ranked the 232nd; Zhongnan Construction Group is ranked the 240th.

Nantong offshore wind power intelligent monitoring platform launched

By Wu Xiaoyun

On 15 September, Nantong offshore wind power intelligent monitoring platform was launched officially and went into operation.

In the present there are in total 23 wind power plants in Nantong. The total installed capacity of offshore wind power is 1.45 million kilowatts, which is one fourth of the total amount of China. By intelligent monitoring platform, people can 'have an overall view' of the conditions of wind power plants in the district, and obtain the numbers and positions of ships, crew and workers on site in real time; can check the specific conditions of each wind power plant. Ships which are not filed and approved by maritime sectors or have not passed check are shown as red alarm in monitoring water area. Maritime sectors can work on it with corresponding methods as soon as possible.



As the 1st deep water self-operated gas field in our country, China National Offshore Oil Corporation Lingshui 17-2 gas field has completed 1st exploration well work successfully. On 14 September, CNOOC Lingshui 17-2 gas field Ethylene glycol regeneration unit (MRU) contracted by Morimatsu (Jiangsu) heavy industries Co., Ltd located at Changjiang town of Rugao was delivered successfully.

Photo by Qiao Qing and Jin Xiao

You Wuqu's 110th anniversary art exhibition open

By Xu Peiqin

On 18 September, 'peaceful and calm, brush and paint merge - You Wuqu's 110 anniversary art exhibition' was opened at No.3 exhibition hall of level 1 of new exhibition hall of Nantong Museum. 68 representative works from You Wuqu, in the 92 years from 1994 to 2006 were exhibited, which presented painter You Wuqu's great achievements in multiple fields such as poetry, calligraphy, painting, and garden work.

There are many types of exhibits, such as water and ink landscape painting, colored landscape painting, pines, flowers and calligraphy works. In the



exhibition hall, You Wuqu's photos of drawing in Huangshan and anatomical maps while he was working in medi-

cal school were presented by inkjet. There are contents of comments about You Wuqu by domestic leading experts, schol-

ars and painters.

'My father started to learn traditional Chinese painting at five years old. He did not drop the brush for his life.' You Wuqu's only son, honorary curator of Nantong Guanglang tang You Wuqu art museum, You Shihuang said. You Shiliang donated You Wuqu's work *waterfall in deep valley* done in 1943 to Nantong Museum.

The exhibition was held by Nantong Museum and Nantong Guanglang tang You Wuqu art museum, assisted by Nantong calligraphy and Chinese painting research institute and Nantong cultural and art work research center. It will last until 25 October.

Renovation of old workers' quarters in Tangzha ancient town

By Ren Yibin

On 15 September, the reporter noticed that at the old workers' quarters in Tangzha ancient town, renovation work was coming to the end. Person in charge of Nantong Tangzha ancient town protection and development Co., Ltd introduced that after renovation, the old workers' quarters' inhabitation function will be restored, some part will be built as experience halls for

exhibition.

More than 100 years ago, entrepreneur Zhang Jian founded Dasheng Cotton Mills in Tangzha ancient town. To solve the inhabitation problem of middle management and engineering staff of the plant, staff's living quarters - old workers' quarters were built in Xishi Street to the north of the plant. The workers' quarters face south. There are 6 houses, 3 two-storey houses

and 3 one storey houses. It is brick and timber structure Chinese building. The floor area is 3220 square meters. The old workers' quarters are historical buildings of Nantong now.

Since Tangzha ancient town historical building protection and renovation and infrastructure facilities update project was started in 2016, obvious progress was made. According to the design plan of Architects and Engineers Co., Ltd. of Southeast Uni-

versity and world heritage research center of Shanghai Jiaotong University, the project focuses on 'eat, stay, transport, travel, shopping, entertainment' six tourism elements, restored historical cultural sites such as 'Tangjiaxiang cultural leisure area', 'Dada electric rice mill company old site', 'Xinming alley', 'Fuxing alley', 'Dukou alley', 'Beishi street shopping street'. The total renovated and altered floor area is 40 thousand square meters.